

BK3 Series

2, 3-inch Kiosk Printer



Healthcare

Retail

Hospitality

Ticketing

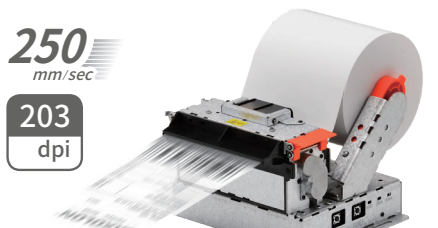
Flexible and Reliable



BK3-21

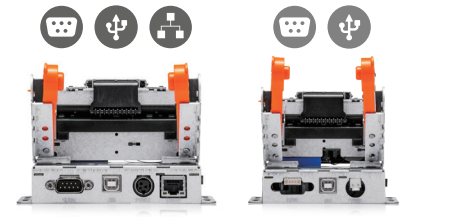
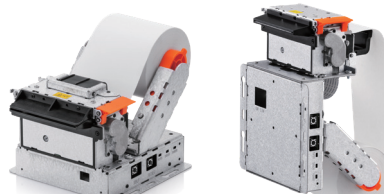


BK3-31



250
mm/sec

203
dpi



Powerful Printing Performance

- Fast speed up to 250 mm per second at 203 dpi
- Long term reliable operation in a wide range of temperatures
- Supporting selectable media widths of 83 / 80 / 60 / 58 / 20 mm
- Ideal ticket solution handling media thickness of up to 0.12mm
- A variety of drivers and SDKs for major operating systems
- Reducing paper usage up to 25% resulting in less waste and lower CO2 emission

User-Centered Design

- Adaptable to hold media diameter of 80 / 102 / 120 mm
- The compact and lightweight design to fits perfectly into constricted spaces
- Power switch and reset button are available on both sides of the printer for easy reboot
- Multi-position near end sensor for efficiently monitoring status of paper

High Flexibility

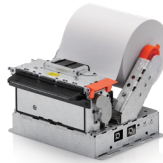
- Standard Interface: USB (V2.0 Full Speed) + Serial
- Optional Interface: USB (V2.0 Full Speed) + Serial + Ethernet (BK3-31 only)
- Power: DC-Jack or 2P Connector
- Serial: 9P Male or 5P Connector
- Range of bezel options: None Bezel / 4 Types of Standard Bezel / LED Bezel (Available for the BK3-31 Only)

BK3 Series

2, 3-inch Kiosk Printer



BK3-21



BK3-31 (Ticket / LED / Presenter / Vertical)

Specifications

Print Characteristics

Print Method

Direct Thermal

Print Speed

Up to 250 mm/s

Print Resolution

203 dpi

Print Width

BK3-31: 72 / 54 / 48 / 12 mm

BK3-21: 54 / 48 / 12 mm

Sensor

Paper End, Cover Open, Near End, Black Mark

Media Characteristics

Media Type

Receipt, Ticket

Media Width

BK3-31: 83 / 80 / 60 / 58 / 20 mm

BK3-21: 60 / 58 / 20 mm

Media Roll Diameter

Up to 120 mm

Media Thickness

0.05 ~ 0.12 mm

Supply Method

Easy Paper Loading

Physical Characteristics

Dimensions (WxLxD)

BK3-31:

Media Roll Diameter Φ 80: 130 x 130 x 91

Media Roll Diameter Φ 102: 130 x 147 x 99

Media Roll Diameter Φ 120: 130 x 143 x 105

BK3-21:

Media Roll Diameter Φ 80: 109 x 130 x 91

Media Roll Diameter Φ 102: 109 x 137 x 99

Media Roll Diameter Φ 120: 109 x 144 x 105

Weight

BK3-31: 700 g

BK3-21: 600 g

Electrical

100-240V AV, 50/60Hz

Lever Direction

BK3-31: Left / Right

BK3-21: Right

Mount Direction

Horizontal / Vertical

Performance Characteristics

NV Image Memory

256 Kbytes (Mono)

Receive Buffer

64 Kbytes

User Define Buffer

12 Kbytes

Interface

Standard: USB (V2.0 Full Speed) + Serial

Optional: USB (V2.0 Full Speed) + Serial + Ethernet (BK3-31 only)

Connector Type

Power: DC-Jack or 2P Connector

USB: BK3-31: USB B or 4P Connector

BK3-21: USB B(Default)

Serial: 9P Male or 5P Connector

Environment Characteristics

Temperature

Operating: -20 ~ 60°C (-4 ~ 140°F)

※ Optimal printing performances and maximum reliability will be obtained between 0 and 40°C

Storage: -20 ~ 60°C (-4 ~ 140°F)

Humidity

Operating: 10 ~ 95% (non-condensing)

Storage: 10 ~ 95% (non-condensing) excluding paper

Reliability

Thermal Print Head (TPH)

100 km

Auto Cutter

1.5 Million Cuts

Software

Emulation

BXL / POS

Driver / Utility

Windows Driver, OPOS Driver, Linux / Mac CUPS Driver, Utility Program

SDK/Plugin

Android SDK, Windows SDK, Linux SDK

Fonts / Graphics / Symbologies

Character Size

Font A: 12 x 24 Font B: 9 x 17 Font C: 9 x 24

KOR, CHN, JPN: 24 x 24

Characters Per Line

Print width 72 mm : Font A: 48 Font B, C: 64, KOR, CHN, JPN: 24 (BK3-31 only)

Print width 54 mm : Font A: 36 Font B, C: 48, KOR, CHN, JPN: 18

Print width 48 mm : Font A: 32 Font B, C: 42, KOR, CHN, JPN: 16

Print width 12 mm : Font A: 8 Font B, C: 10, KOR, CHN, JPN: 4

Character Sets

Alphanumeric: 95

Extended Graphics: 128 x 35 page

International: 32

Graphics

Supporting user-defined fonts, graphics, formats and logos

Barcode Symbologies

1D: Coda Bar, Code 39, Code 93, Code 128, EAN-8, EAN-13, ITF, UPC-A, UPC-E

2D: Data Matrix, GS1-128, GS1 DataBar Stacked / Omnidirectional / Truncated / Limited / Expanded, PDF417, QR code

Option

Bezel

Type: BK3-31: Non-Bezel / Standard-Bezel (4 types) / LED-Bezel(Green)

BK3-21: Non-Bezel / Standard-Bezel (4 types)

Media Width: BK3-31: 83 / 80 / 60 / 58 / 20 mm

BK3-21: 60 / 58 / 20 mm

Media Thickness: 0.05 ~ 0.12 mm

Presenter (BK3-31 only, LED-Bezel default)

Paper stock direction: Upper

Media Width: 80 mm

Media Thickness: 0.05 ~ 0.10 mm

Media Length: 50 ~ 250 mm

Media Core Outer Diameter: Φ 31.4(Min)

Ejection Speed: 250 mm/s(Max)

Accessories

Optional

SMPS (DC Jack), SMPS (2P Connector),

Male to Male type Serial Cable,

5P to Male type Serial Cable,

USB A-B Cable 1.8m, Power Cord