

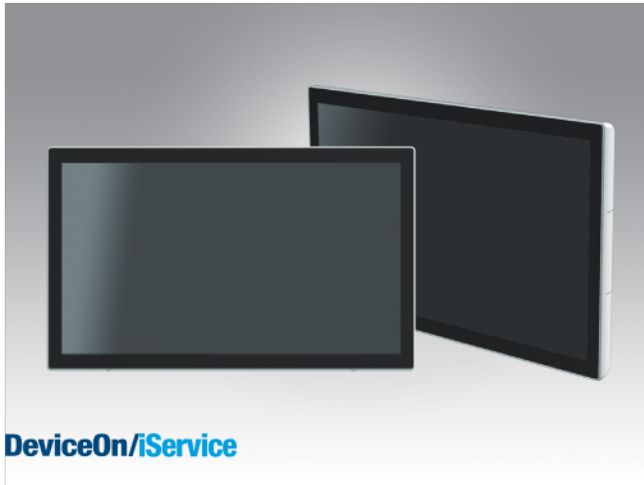
# UTC-320

## 21.5" Ubiquitous Touch Computer

UTC-320D with Intel® Celeron® J1900

UTC-320G with Intel® Celeron® N3350/Pentium® N4200

UTC-320K with Intel® Atom® N97/i3-N305



DeviceOn/iService

### Features

- Low power and fanless system design
- Built in Intel Celeron® J1900 (UTC-320D), Pentium® N4200 (UTC-320G) and Intel® Atom N97 (UTC-320K)
- 21.5" monitor with 16:9 widescreen display
- IP65-rated front panel for water and dust resistance
- Supports both landscape and portrait screen orientations
- VESA 100 mm standard mounting holes for varied mounting demands
- Detachable frame design for panel mount applications
- Support DeviceOn/iService software for remote device management (UTC-320D only)
- Support TPM 2.0 (UTC-320G, UTC-320K)



### Introduction

UTC-320 is the multi-purpose all-in-one computing system which equipped with wide format, touch based LCD panel. It is easy to integrate key peripherals and display systems for diversified self-service and interactive signage deploy in different application areas. With the removable frame, the system also could fulfill industries or control system applications with panel mounting design. UTC series touch panel computers are the best investments to enhance user satisfaction, further brand equity, and maximize business profits.

Moreover, UTC-320 is equipped with Advantech's DeviceOn/iService software, which is a next-generation unified device management solution based on the WISE-DeviceOn platform. With support for batch operations and multi-device control, DeviceOn/iService enables easy device configuration and deployment for convenient remote device management.

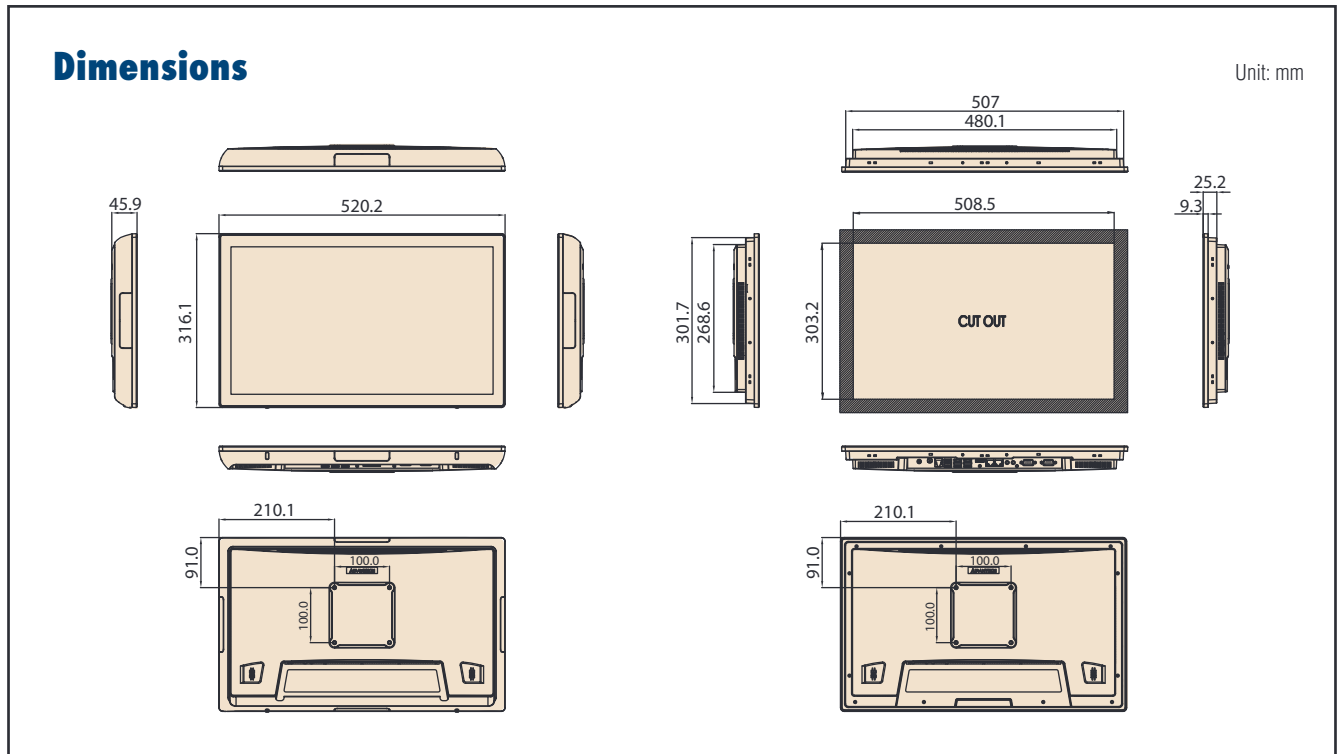
### Specifications

Model	UTC-320D	UTC-320G	UTC-320K	
Processor System	CPU	Intel® Celeron® J1900	Intel® Pentium® N4200 (Default) Intel® Celeron® N3350	Intel® Atom® N97 (Default) Intel® Atom® i3-N305
	Basic Frequency	2.0 GHz (Quad-Core)	N4200: 1.1GHz (Quad Cores) N3350: 1.1GHz (Dual Cores)	N97: 3.6GHz (Quad-Core) i3-N305: 3.8GHz (Octa-Core)
	Cache	L2 Cache 2MB	L2 Cache 2MB	L3 Cache 6MB
	Memory	1 x 204pin SO-DIMM DDR3L 1333 MHz up to 8 GB	1 x 204pin SO-DIMM DDR3L 1866 MHz up to 8GB	1 x 262pin SO-DIMM DDR5 4800 MHz up to 16GB
	HDD	1 x 2.5 internal SATA HDD bay		
	Network	2 x Gigabit Ethernet ports (RJ-45)		
	I/O ports	1 x RS-232 1 x RS-232 / 422 / 485 5 x USB 2.0 / 1 x USB 3.0 2 x Gigabit Ethernet (RJ-45) 1 x HDMI Audio Line-out x 1, Mic-in x 1	1 x RS-232 1 x RS232 / 422 /485 2 x USB 2.0 / 4 x USB 3.0 2 x Gigabit Ethernet (RJ-45) 1 x HDMI 1 x RJ11 (12V output only) Audio Line-out x 1, Mic-in x 1	1 x USB Type C DC IN 1 x USB Type C 2 x USB 3.2 2 x Gigabit Ethernet (RJ-45) 1 x HDMI 1 x RS-232 (RJ-48) 1 x RS-232/422/485 (RJ-48) 1 x 3.5mm Universal Audio Jack 2 x USB 2.0 Type A
	Stereo Speaker	2Wx2		
	BUS expansion	Full-size MiniPCIe/mSATA	1 x Full-size MiniPCIe for mSATA SSD 1 x M.2 2230 E-Key	1 x M.2 2280/2242 M-Key for NVMe(Pcie Gen3)/SATA SSD 1 x M.2 2230 E-Key
	Mounting	VESA 100 x 100; Screw Size: M4, 10mm		
	Dimension (W x H x D)	520.2 x 316.1 x 45.9 mm		
	Weight	6.5 Kg		
Security	TPM2.0	N/A	Optional	Support
OS support	Win 10 IoT Enterprise 64bit Linux Android 6.0	Win 10 IoT Enterprise 64bit Android 10.0 Linux	Win 10/11 IoT Enterprise 64bit Android 14 Linux	
Environmental Specifications	Operating Temperature	0 ~ 40° C (32 ~ 104° F)		
	Relative Humidity	10 ~ 95% @ 40° C non-condensing		
	Vibration	0.5G		
	Shock	10 G peak acceleration (11 msec. duration)		
	EMC/ Safety	CE, FCC, UL, CCC, CB, BSMI, UKCA		
Front Panel Protection	IP65/ NEMA4 Compliant			

## Specifications (Cont.)

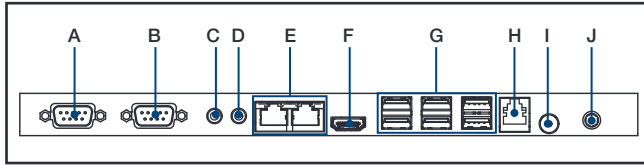
Power Supply	Input Voltage	12V <sub>DC</sub> *12-30V <sub>DC</sub> Optional	20V <sub>DC</sub>
	Power Consumption	Typical 45W, Max. 80W	Typical 45W, Max. 90W
	Adapter	12V = 7A, 84W or 12V = 8A, 96W ITE adapter (dependent on stock)	20V=4.5A
LCD Display	Size	21.5" TFT LCD	
	Max Resolution	1920 x 1080	
	Max Color	16.7M	
	Pixel Pitch (um)	248.25 (H) x 248.25 (V)	
	Brightness (cd/m <sup>2</sup> )	250 (Typical)	
	View Angle	178°/178°	
Touch Screen	Type	Analog Resistive 5-wires (Res. Flat Glass) / Projected Capacitive Touch Panel (Pcap. Flat Glass) / Glass Panel	
	Light Transmission	90% ± 2% / 80% ± 5% / 90%	
	Controller	COM interface / USB interface	
DeviceOn/iService Remote Device Management	Operating System	Windows 10	
	Common Controls (Reboot, Shutdown)	✓	
	Remote desktop	✓ (VNC)	
	Audio Controls	✓*	
	Connection Status	✓	
	Hardware Status	✓*	
	Hard Disk Status	✓*	
	Batch Operation Support	✓	
	OTA Storage Management	FTP	
	OTA Software Updates	✓	
*Dependant on device model	Software Watchlist	✓	
	Software Start/Stop	✓*	
	Peripherals Watchlist	✓*	

Note: DeviceOn/iService software must be downloaded from the Advantech website at <https://www.advantech.com/search?q=DeviceOn%2FiService&st=support&ssl=Utility>



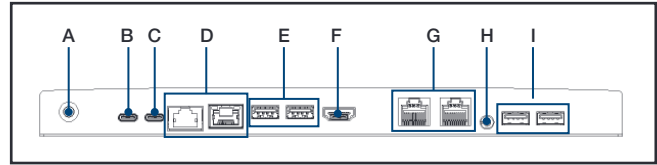
## Fully- Integrated I/O

### UTC-320D/G



- A. COM1
- B. COM2
- C. Line-out (UTC-320D)  
Mic-in (UTC-320G)
- D. Mic-in (UTC-320D)  
Line-Out (UTC-320G)
- E. LAN ports x 2
- F. HDMI
- G. USB 2.0 x 5 / USB 3.0 x 1 (UTC-320D)  
USB 2.0 x 2 / USB 3.0 x 4 (UTC-320G)
- H. RJ-11 (UTC-320G, 12V output only)
- I. Power button
- J. DC input 12V

### UTC-320K



- A. Power button
- B. USB Type C DC IN
- C. USB Type C Only
- D. LAN x 2
- E. USB 3.2 x 2
- F. HDMI
- G. RJ48 x 2 (COM)
- H. Universal Audio Jack
- I. USB 2.0 x 2

## Ordering Information

Part No.	Description
UTC-320DR-ATB0E	21.5" Black, Intel® Celeron® J1900, Res T/S, 4GB RAM, IT Adapter
UTC-320DP-ATB0E	21.5" Black, Intel® Celeron® J1900, PCap T/S, 4GB RAM, IT Adapter
UTC-320GR-ATB0E	21.5" Black, Intel® Pentium® N4200, Res T/S, 4GB RAM, IT Adapter
UTC-320GP-ATB0E	21.5" Black, Intel® Pentium® N4200, PCap T/S, 4GB RAM, IT Adapter
UTC-320KP-ATB0E	21.5" Black, Intel® Atom® N97, PCap T/S, 8GB RAM, IT Adapter
UTC-320KP-ATB1E	21.5" Black, Intel® Atom® i3-N305, PCap T/S, 8GB RAM, IT Adapter

\*White color and white touch bezel could be customized by customer request with MOQ

### UTC-320 WiFi Ordering Information

Part No.	Description
UTC-300P-W11E/W13E	WiFi Kit for UTC-320D (MiniPCIe, WiFi and Bluetooth, W11E CE RED certified)
UTC-300P-W12E/W14E	WiFi Kit for UTC-320G/K (M.2 2230, WiFi and Bluetooth, W12E CE RED certified for UTC-315G, W14E CE RED certified for UTC-315K)

### Installation Accessory

Part No.	Description
UTC-300P-D20E	Desk Stand, Single Color-Silver (UTC-318/UTC-320 series)
UTC-T01-STANDE	Triangle shape floor stand (UTC-315/UTC-318/UTC-320 series)
UTC-H01-STANDE	H-shaped floor stand (UTC-315/UTC-318/UTC-320 series)
UTC-PANEL-MOUNT4E	Panel mount Kit(UTC-320Series)
ARES-12240-AR01100	Wall Mount Kit, support 2~10kg, VESA 75/100mm (Tilttable)
ARES-12250-L101000	Wall Mount Kit, Max. support 25kg, VESA 75/100mm (Fixed)

### Peripherals for UTC-300 series

Part No.	Description
UTC-300P-C20E	5M Camera Module, White, for UTC-300 series
UTC-300P-C21E	5M Camera Module, Black, for UTC-300 series
UTC-300P-M20E	Magnet Strip Reader, White, for UTC-300 series
UTC-300P-M21E	Magnet Strip Reader, Black, for UTC-300 series
UTC-300P-R20E	RFID Reader, White, for UTC-300 series
UTC-300P-R21E	RFID Reader, Black, for UTC-300 series
UTC-300P-S20E	Smart Card Reader, White, for UTC-300 series
UTC-300P-S21E	Smart Card Reader, Black, for UTC-300 series
UTC-300P-B60E	2D Barcode Reader, White for UTC-300 series
UTC-300P-B61E	2D Barcode Reader, Black for UTC-300 series
1700025928-03	RJ48 to D-SUB cable, 35cm

### Power Cord Ordering Information

Part No.	Description
1700019146	Power cable CCC 3P 2.5A 250V 183cm
1700001524	Power cable 3P, UL, 7A, 125V, 183 cm (US, TW)
170203183C	Power cable 3P, 2.5A, 250V, 183 cm (EU)
1700018553	Power cable SAA 3P 2.5A 250V 183cm (Australia)
1700025113-11	Power cable BIS 3P 2.5A 250V 180cm (India)
1700018409	Power cable KC 3P 2.5A 250V 183cm (Korea,Russia)
170203180A	Power cable BSI 3P 2.5A 250V 183cm (UK)
1700008921	Power cable PSE 3P 7A 125V 183cm (Japan)
1700021375-01	Power cable BSMI 3P 2.5A 125V 250cm (IEC60320-C5)

# DeviceOn/iService

## Unified Remote Device Management Software



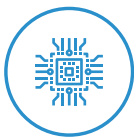
### Features

- Supports Advantech devices equipped with Windows, Android, and Linux OS
- Flexible device, location, user, and permissions management
- Enables remote monitoring and control of hardware, software, and peripherals
- Supports over-the-air (OTA) firmware and software updates
- Ensures quick, easy, and secure device onboarding
- RESTful APIs for third-party system integration

### Introduction

Advantech's DeviceOn/iService is a next-generation unified device management solution based on the WISE-DeviceOn platform. Designed to enable centralized monitoring and remote management, DeviceOn/iService supports Advantech devices equipped with Windows, Linux, or Android operating systems. The software also supports the management of applications and integrated peripherals, such as a barcode scanner, card reader, camera, and printer. Users can remotely access and control connected devices, take screenshots, rollout OTA upgrades, and use remote desktop capabilities for troubleshooting from any location at any time. Moreover, DeviceOn/iService supports batch operations to facilitate the management of multiple devices simultaneously for easy and convenient device configuration and deployment.

### Total Management



#### Devices & Hardware

- Windows, Linux, Android
- Hardware, storage, battery



#### Software & Peripherals

- Software monitoring & access
- Screens, USB devices, printers



#### Open for Expansion

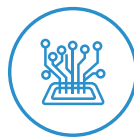
- Peripheral integration
- Open APIs for integration

### Remote Access



#### Real-Time Monitoring

- Connection/hardware status
- Software/peripheral status
- Failure notifications



#### Remote Controls

- Power controls
- Audio, backlight controls
- Software controls



#### Troubleshooting

- Screenshots
- Remote desktop support

### Operational Efficiency



#### OTA updates

- System/software updates
- File repository management
- App store



#### Batch Controls

- 1-to-many batch reboot, etc.
- Time-saving tasks



#### Setup Booster

- Software/peripheral watchlist
- Roles, rule templates

Note: Some functions may vary according to the product

### System Architecture

